



# Massachusetts Water Resources Authority

## *MWRA Water System Expansion Studies*

**Colleen Rizzi**

Director, Environmental and Regulatory Affairs

**Water Supply Citizens Advisory Committee**

February 13, 2024

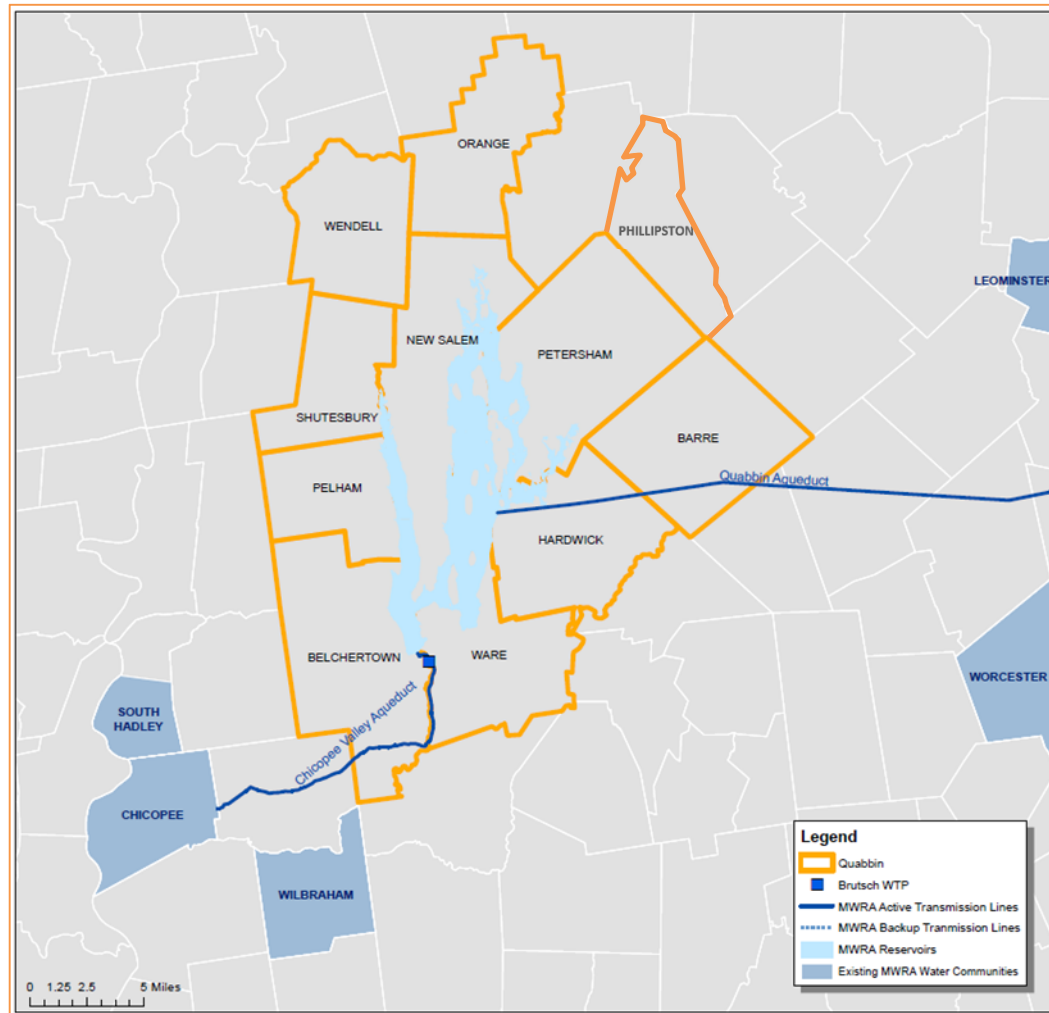


## Status of System Expansion Studies

- 3 completed studies (2022)
  - Ipswich River Basin
  - South Shore Communities
  - MetroWest Communities
- Quabbin Reservoir Watershed Communities (in process)



# Quabbin Reservoir Watershed Communities – New Study





## Purpose of Quabbin Study

- Planning Level Study
- Evaluate feasibility of supplying these communities from the Quabbin Reservoir
  - Water supply alternatives?
  - Costs and timeframes of supplying water?
- Additional work beyond the study would be required for any community to connect to MWRA

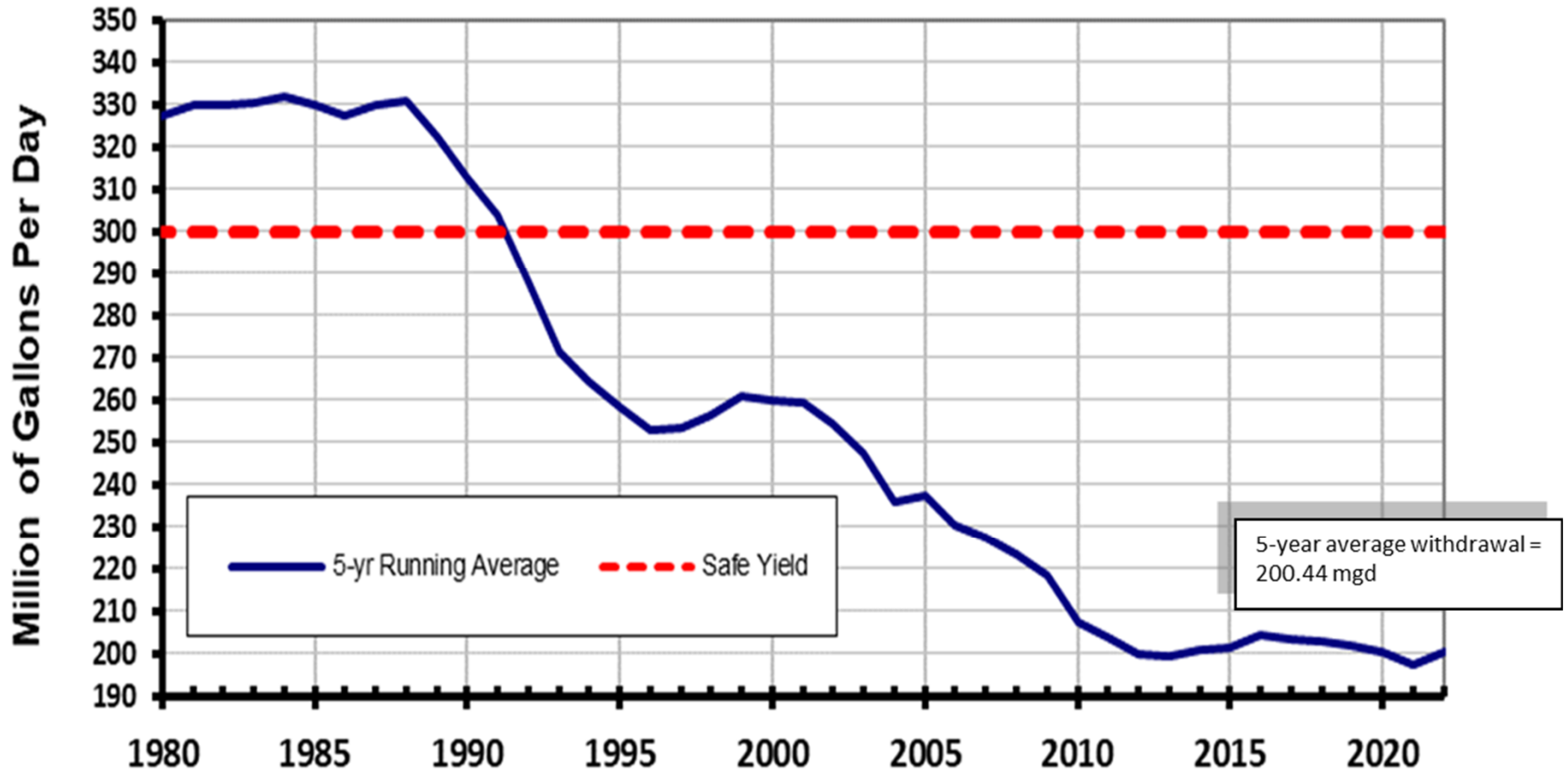


## MWRA's Capacity to Provide Additional Water

- Safe Yield = **300 MGD**
  - Amount of water MWRA's source reservoirs, the Quabbin and Wachusett, can safely provide even during periods of extended drought
- Average 5-year reservoir withdrawals (2013-2018) = **203 MGD**
- Conservative growth for increased population and employment = **29 MGD**
- Additional demand from existing partial and emergency users = **17 MGD**
- Conservative Estimate of Future Use = **249 MGD**
- Available supply for new communities = **51 MGD** (average or  $\approx$  76.5 MGD on a maximum demand day)



# Reservoir Withdrawals from 1980 to 2022





## Status of Recent Inquiries

- Partially Supplied Communities Considering Increasing Supply
  - Wellesley
  - Wilmington
- Communities have Received Approval to Pursue Admission from Governing Body
  - Hopkinton
  - Lynnfield Center Water District (currently undergoing MEPA review)
  - Natick
  - Wayland
- Various Stages in Decision-Making Process
  - Avon
  - Billerica
  - Select South Shore communities (Hingham, Norwell, Hanover, Abington, Rockland, Scituate, Cohasset)
  - Weymouth/Former Naval Air Station
  - North Sherborn Water and Wastewater District (proposed)
  - Select MetroWest Communities
  - Walpole



## Study Update and Next Steps

- **Next Steps:**
  - Continue with the Quabbin Watershed study
  - Continue working with interested communities in other study areas
- **Completed Studies**
  - <https://www.mwra.com/02org/html/expansion.html>