

2019 Flounder Monitoring Results



Massachusetts Water Resources Authority
Environmental Quality Department
Report 2019-10



Citation:

Moore MJ, Nestler EC, Rutecki DA. 2019. **2019 Flounder monitoring results**. Boston: Massachusetts Water Resources Authority. Report 2019-10. 21 p.

Cover photo courtesy of Michael Moore, Woods Hole Oceanographic Institution

Environmental Quality Department reports can be downloaded from
<http://www.mwra.com/harbor/enquad/trlist.html>

2019 Flounder Monitoring Results

Submitted to

Massachusetts Water Resources Authority
Environmental Quality Department
100 First Avenue
Charlestown Navy Yard
Boston, MA 02129
(617) 242-6000

Prepared by

Michael Moore¹
Eric C. Nestler²
Deborah A. Rutecki²

¹Woods Hole Oceanographic Institution
Woods Hole, MA 02543

²Normandeau Associates, Inc.
25 Nashua Road
Bedford, NH 30110

November 2019

Environmental Quality Report 2019-10

TABLE OF CONTENTS

EXECUTIVE SUMMARY 3

1. INTRODUCTION 4

2. METHODS..... 5

 2.1 STATIONS AND SAMPLING 5

 2.2 HISTOLOGICAL ANALYSIS 7

 2.3 DATA REDUCTION AND GENERAL DATA TREATMENT 7

 2.4 DEVIATIONS FROM THE QAPP 8

3. RESULTS AND DISCUSSION 9

 3.1 FISH COLLECTED..... 9

 3.2 PHYSICAL CHARACTERISTICS 9

 3.3 EXTERNAL CONDITION 12

 3.4 LIVER LESION PREVALENCE 14

 3.5 THRESHOLD COMPARISON..... 18

4. CONCLUSIONS..... 19

5. REFERENCES..... 21

FIGURES

Figure 2-1. Flounder monitoring locations for 2019..... 6

Figure 3-1. Catch Per Unit Effort (CPUE) for winter flounder trawled 1991–2019..... 9

Figure 3-2. Average flounder age (years) compared by station and year. 10

Figure 3-3. Average flounder standard length (mm) compared by station and year..... 11

Figure 3-4. Average flounder weight (grams) compared by station and year. 11

Figure 3-5. Proportion of female flounder compared by station and year. 12

Figure 3-6. Temporal comparison of blind side ulcer prevalence (%) in winter flounder by station. 13

Figure 3-7. Temporal comparison of fin erosion prevalence (%) in winter flounder by station. 14

Figure 3-8. Temporal comparison of neoplasia prevalence (%) in winter flounder by station. 15

Figure 3-9. Temporal comparison of prevalence (%) of centrotubular hydropic vacuolation in winter flounder by station..... 16

Figure 3-10. Centrotubular hydropic vacuolation severity (rank) in winter flounder compared between sites and years..... 16

Figure 3-11. Proportion (%) of winter flounder showing hydropic vacuolation for each age..... 17

Figure 3-12. Hydropic vacuolation index (CHV%/age) for each station by year. 18

TABLES

Table 2-1. Flounder Sampling Locations in 2019..... 7

Table 3-1. Summary of Physical Characteristics of Winter Flounder Collected in 2019. 10

Table 3-2. Prevalence (%) of External Conditions Assessed for Winter Flounder Collected in 2019..... 12

Table 3-3. Prevalence (%) of Liver Lesions in Winter Flounder Collected in 2019..... 15

EXECUTIVE SUMMARY

The detection of high prevalence of contaminant-associated liver disease such as liver tumors and centrotubular hydropic vacuolation (CHV) in winter flounder from Boston Harbor in the late 1980s was one of the findings that contributed to the concern about the ecological health of the Harbor. For example, in 1988, over 75% of flounder collected in Boston Harbor showed evidence of disease in liver tissue known to be associated with contaminant exposure, and 12% of the fish contained neoplasias (liver tumors), which also have a contaminant related etiology (Moore et al. 1996).

The siting of MWRA's Massachusetts Bay outfall caused concerns that flounder in Massachusetts Bay exposed to the relocated effluent discharge might over time show substantially increased prevalence of these contaminant-associated lesions. Therefore, a long-term monitoring program for winter flounder was established. The goals of this program are to provide data that can be used to assess potential impacts to winter flounder in the vicinity of the outfall and to track the expected long-term improvements in flounder health in Boston Harbor. Flounder are collected from near the outfall and from sites in Boston Harbor, off Nantasket Beach, and in Cape Cod Bay. Flounder from each site are sampled annually for length, weight, age, biological condition, and the presence of external or internal disease. Concentrations of inorganic and organic contaminants in body tissues are determined every third year (undertaken in 2018).

The 2019 data represent the nineteenth consecutive year of flounder monitoring since the start-up of the Massachusetts Bay outfall in September 2000. Results of the histological analyses in 2019 support previous observations made from this long-term dataset.

- Age-corrected hydropic vacuolation data suggest that the prevalence in flounder from Deer Island flats trended consistently downwards and then stabilized (with substantial inter-annual variability) around a lesion prevalence in Harbor fish of about 35-40%.
- The high neoplasm prevalence characteristic of fish from DIF in the mid- to late-1980s (Moore et al. 1996) has disappeared. Neoplasia has not been observed in a fish from Boston Harbor since 2004, and has never been observed in fish collected at the outfall site.
- Disease prevalence at the eastern Cape Cod Bay reference site has been relatively stable since monitoring began there in 1991 and is consistently the lowest of all areas sampled.
- The prevalence of CHV in flounder from the vicinity of MWRA's Massachusetts Bay outfall has not shown increases over levels observed during baseline monitoring. During most years since offshore discharge was initiated, prevalence has been less than that observed during the baseline monitoring before 2001. CHV prevalence increased consistently between 2005 and 2010, and has generally declined again in recent years, with some year-to-year variability (Figure 3-12).

1. INTRODUCTION

The Massachusetts Water Resources Authority (MWRA) has implemented a long-term Harbor and Outfall Monitoring (HOM) Program for Massachusetts and Cape Cod Bays. The objectives of the HOM Program are to test whether the environmental impacts of the MWRA discharge are consistent with EPA projections and do not exceed Contingency Plan thresholds (MWRA 2001). A detailed description of the monitoring and its rationale is provided in the Effluent Outfall Monitoring Plan developed for the baseline period and the post-discharge monitoring plan (MWRA 1997, 2004, 2010).

The detection of high prevalence of contaminant-associated liver disease (a condition known as centrotubular hydropic vacuolation) in winter flounder from Boston Harbor in the late 1980s was one of the findings that contributed to the concern about the ecological health of the Harbor. For example, in 1988, over 75% of flounder collected in Boston Harbor showed evidence of disease in liver tissue associated with contaminant exposure, and 12% of the fish contained liver tumors, also associated with exposure to contaminants (Moore et al. 1996).

Following the design of the MWRA Deer Island Treatment Plant and the siting of the Massachusetts Bay outfall, concerns were raised that flounder in Massachusetts Bay exposed to the relocated effluent discharge might over time show substantially increased prevalence of these contaminant-associated lesions. Therefore, a long-term monitoring program for winter flounder (MWRA 1991) was established. The goals of this program are to provide data that can be used to assess potential impacts to winter flounder in the vicinity of the outfall and to track the expected long-term improvements in flounder in Boston Harbor. Resident flounder are collected from near the outfall and from sites in Boston Harbor, Massachusetts Bay, and Cape Cod Bay (hereafter: Boston Harbor and the Bays). Measured parameters for flounder include length, weight, age, biological condition, the presence of external or internal disease, and concentrations of inorganic and organic contaminants in body tissues. Data have been collected since 1991. The full program was conducted annually until 2003. Since then tissue contaminant monitoring is now done every third year (it was undertaken in 2018). Flounder morphology and histopathology remain on an annual schedule. A summary of this and earlier studies was published by Moore et al. (2018).

This report presents morphology and histopathology results for the 2019 flounder survey. The scope of the report is focused on assessing changes to flounder condition that may have resulted from the relocation of the outfall discharge. The 2019 data represent the nineteenth consecutive year of flounder monitoring since the start-up of the Massachusetts Bay outfall in September 2000. A summary of the survey and laboratory methods used for flounder monitoring is provided in Section 2. The results of monitoring data from the survey conducted during 2019, along with comparisons to historical flounder data, are presented in Section 3. Finally, conclusions drawn from the 2019 results and historical trends are summarized in Section 4. By comparing values with established thresholds and evaluating trends over time, these flounder data are used to ensure that discharge of effluent into the Bay does not result in measured adverse impacts to fish.

2. METHODS

Winter flounder (*Pseudopleuronectes americanus*) were collected from four locations in Boston Harbor and the Bays (Figure 2-1) to obtain specimens for age, weight and length determination, gross examination of health, and histology of livers. The methods and protocols used during the 2019 flounder survey were similar to and consistent with previously used methods. Detailed descriptions of the methods are contained in the Quality Assurance Project Plan (QAPP) for Fish and Shellfish Monitoring 2017–2019 (Rutecki et al. 2017).

2.1 Stations and Sampling

The 2019 flounder survey was conducted between April 29th and May 1st, 2019. Four sites were sampled to collect winter flounder for histological and chemical (reported elsewhere) analyses:

- Deer Island Flats (DIF)
- Off Nantasket Beach (NB)
- Outfall Site (OS)
- East Cape Cod Bay (ECCB)

Figure 2-1 shows the monitoring locations. Table 2-1 provides the planned and actual sampling sites and locations for the 2019 flounder sampling.

Otter-trawl tows were conducted from the F/V *Harvest Moon* operated by Captain Mark Carroll. The scientific crew consisted of principal investigator Dr. Michael Moore from the Woods Hole Oceanographic Institution (WHOI), and biologist Eric Rydbeck from Normandeau Associates, Inc.

Mobilization for the survey was conducted on April 29th, when 40 fish were collected from Deer Island Flats. On April 29th and 30th, a total of 20 fish were collected from Nantasket Beach. On April 30th, 50 fish were collected from the Outfall site. On May 1st, 50 flounder were collected from Eastern Cape Cod Bay. Deer Island Flats and Nantasket Beach had very poor flounder availability in 2019. Fish were weighed and measured individually in the field. Scales were removed from each fish for aging and livers were removed, sliced, examined and three slices fixed.

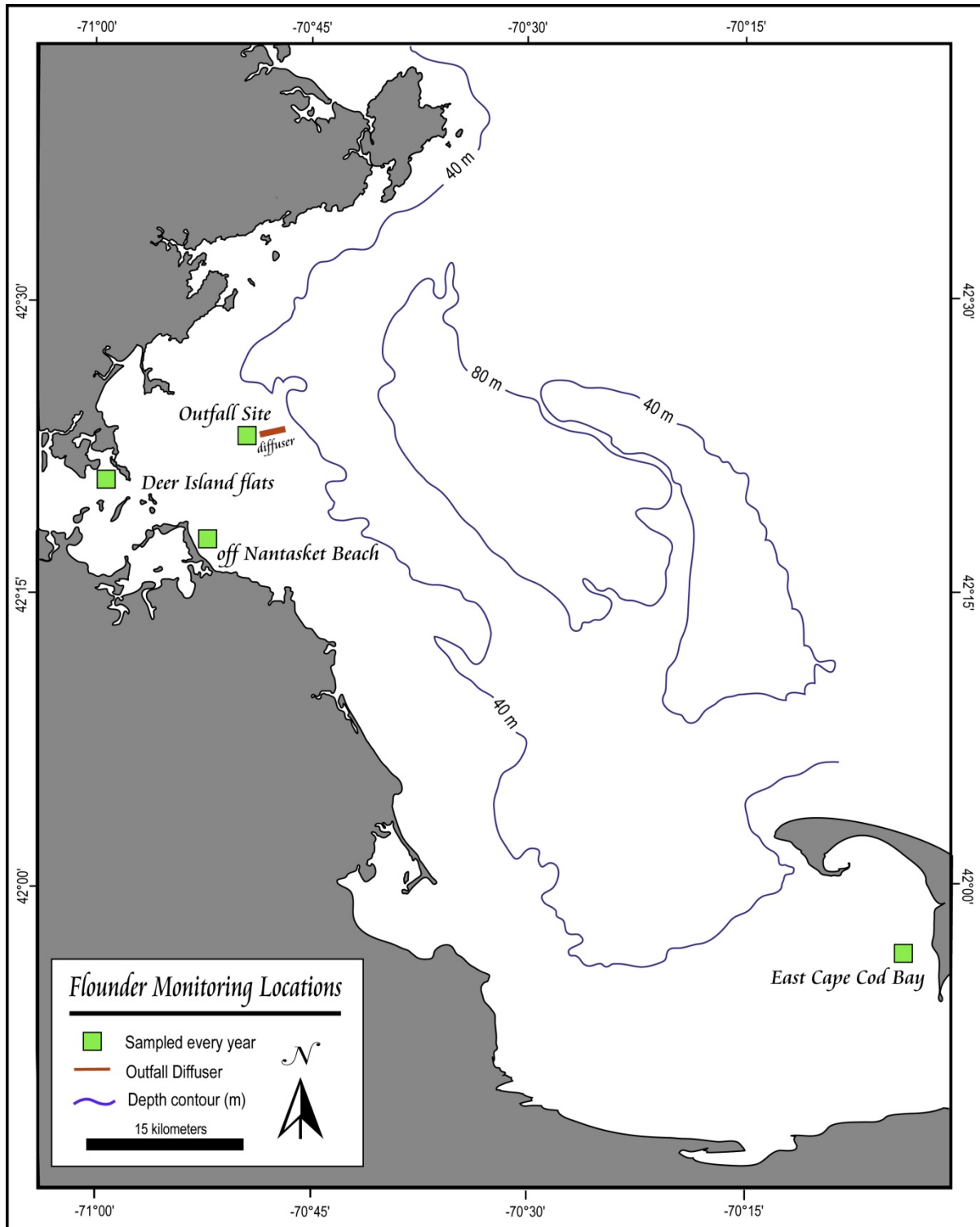


Figure 2-1. Flounder monitoring locations for 2019.

Table 2-1. Flounder Sampling Locations in 2019.

Site (Station ID)/Date/Time			Actual Location		Planned Location	
			Latitude	Longitude	Latitude	Longitude
Deer Island Flats (DIF)	29-Apr-19	7:35	42.3475	-70.9652	42.3400	-70.9733
		8:35	42.3530	-70.9728	42.3400	-70.9733
		9:24	42.3502	-70.9730	42.3400	-70.9733
		10:36	42.3468	-70.9635	42.3400	-70.9733
		11:37	42.3503	-70.9715	42.3400	-70.9733
		12:46	42.3508	-70.9679	42.3400	-70.9733
East Cape Cod Bay (ECCB)	1-May-19	9:35	41.9438	-70.9643	41.9367	-70.1100
Off Nantasket Beach (NB)	29-Apr-19	14:20	42.2918	-70.8693	42.2933	-70.8700
		15:50	42.2913	-70.8693	42.2933	-70.8700
	30-Apr-19	8:15	42.2913	-70.8694	42.2933	-70.8700
Outfall Site (OS)	30-Apr-19	10:25	42.3811	-70.8680	42.3850	-70.8217
		12:55	42.3673	-70.8255	42.3850	-70.8217

2.2 Histological Analysis

Livers of 50 flounder from each site (except 40 at Deer Island Flats, and 20 at Nantasket Beach) were prepared for histological analysis by Experimental Pathology Laboratories in Herndon, VA. Transverse sections of flounder livers fixed as part of tissue sample processing were removed from the buffered formalin after at least 24 hours, rinsed in running tap water, dehydrated through a series of ethanols, cleared in xylene, and embedded in paraffin. Paraffin-embedded material was sectioned on a rotary microtome at a thickness of 5 μ m. Each block contained three liver slices, resulting in one slide with three slices per slide per fish, for a total of 160 slides. The sections were stained in hematoxylin and eosin. Each slide was examined by Dr. Moore under bright-field illumination at 25 x, 100 x, and 200 x magnification to quantify the presence and extent of

- Three types of vacuolation (centrotubular, tubular, and focal)
- Macrophage aggregation
- Biliary duct proliferation and trematode parasitism
- Neoplasia

The severity of each lesion was rated on a scale of 0 to 4, where: 0 = absent, 1 = minor, 2 = moderate, 3 = severe, and 4 = extreme.

2.3 Data Reduction and General Data Treatment

All fish data (1991 to 2019) were extracted directly from the HOM database and imported into SAS (version 9.3), where data reduction, graphical presentations and statistical analyses were performed. Data reduction was conducted as described in the Quality Assurance Project Plan (QAPP) for Fish and

Shellfish Monitoring 2017–2019 (Rutecki et al. 2017). For each liver lesion and each fish, a histopathological index was calculated as a mean of scores from three slices on one slide.

Histopathological indices and prevalence of lesions were compared among groups of flounder by differences in station and age. Flounder monitoring parameters were presented graphically and compared among stations and over time.

2.4 Deviations from the QAPP

The cruise plan contingency for a consultation with Normandeau/MWRA after three hours of bottom time yielding less than fifty fish was invoked for the following two stations in 2019:

1. Deer Island Flats (DIF): On April 29th, Caldwell Marine were installing a new power cable to Deer Island. A barge was anchored half way down our tow track over an open cable trench. We spoke with the operator to understand where the barge anchors lay, and the status of the cable. The cable was apparently suspended by airbags over the trench. They advised us that the work would not be completed at that site until the following week. They agreed that we could trawl to the north and south of the trench. We advised MWRA and Normandeau that the F/V *Harvest Moon* was not available after this week. It was agreed that we should catch what we could. There was no other suitable area to trawl within 3 km of the station, so we elected to trawl north and south of the barge on the flats. Thus, we had to do inefficient elliptical tow tracks. Weed clogging of the net was a significant problem, so we were limited to approximately 30-minute tows. After 3:04 (hr:min) of bottom time, 40 fish were collected at DIF.
2. Nantasket Beach (NB): Flounder availability off Nantasket Beach was very low. In 3:35 (hr:min) of bottom time, 20 fish were collected at NB.

3. RESULTS AND DISCUSSION

3.1 Fish Collected

Winter flounder, each a minimum 30 cm in length, were collected between April 29 and May 1, 2019, at four stations in the study area (Figure 2-1). The catch per unit effort (CPUE), defined as the number of fish at least 30 cm long obtained per minute of bottom trawling time, is reported per station in Figure 3-1. Effort was constant up to and including 2007 with the F/V *Odessa* (70' sweep rope). For 2008, the F/V *Harvest Moon* (74' sweep rope) was used for DIF, NB, and OS, with a net that was 1.04 x wider and for ECCB the F/V *Explorer 2* (84' sweep rope) was used with a net that was 1.2 x wider. Since 2009, the F/V *Harvest Moon* has been used for all stations. Thus, data presented in Figure 3-1 have been normalized to the F/V *Odessa* sweep length by using the ratio of sweep lengths as a multiplier (i.e., CPUE's for the F/V *Explorer 2* net were multiplied by 70/84, and CPUE's for the F/V *Harvest Moon* net by 70/74, to get CPUE units in Odessa equivalents). CPUE in 2019 was lower compared to 2018 at all stations (Figure 3-1). CPUE was highest at ECCB, and low at OS, NB, and DIF.

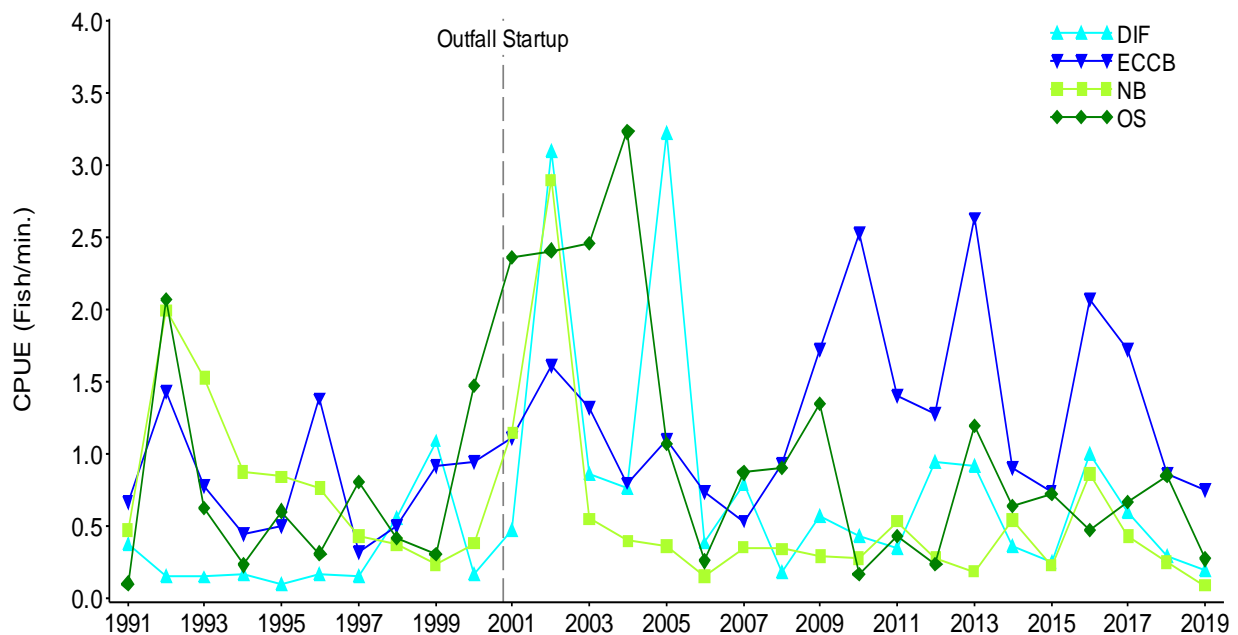


Figure 3-1. Catch Per Unit Effort (CPUE) for winter flounder trawled 1991–2019. Data for 2008 to 2019 have been normalized (see Section 3.1).

3.2 Physical Characteristics

Mean values for physical characteristics of the winter flounder collected in 2019 are reported in Table 3-1. These values reflect the project requirement to collect sexually mature specimens (>30cm total length). Mean age ranged from 4.0 to 4.8 years across the stations. Mean standard length ranged from 276 to 303 mm and mean total length from 335 to 368 mm; weight ranged from a mean of 570 to 720 g.

Mean age in 2019 compared to 2018 (Figure 3-2) was stable for DIF and NB, but increased for OS and ECCB. Scale analysis was used for age determination since 2016 consistent with the methods followed historically for this program (Fields 1988, Rutecki et al. 2017). Otoliths were used for age determination in 2014 and 2015. Comparisons between the two methods indicate that for older fish the otolith method may provide an older age than the scale method. Compared to 2018, standard length (Figure 3-3) in 2019 was stable for all stations except for ECCB which rose markedly. Weights (Figure 3-4) increased at all stations. Percent females (Figure 3-5) also increased at all stations.

Table 3-1. Summary of Physical Characteristics of Winter Flounder Collected in 2019.

Parameter	DIF			ECCB			NB			OS		
	Mean	STDDEV	N	Mean	STDDEV	N	Mean	STDDEV	N	Mean	STDDEV	N
Age (years)	4.05	0.71	40	4.82	0.98	50	4.20	0.89	20	4.60	1.03	50
Standard Length (mm)	284.73	21.70	40	302.70	26.82	50	279.00	29.18	20	275.72	25.22	50
Total Length (mm)	347.46	28.53	39	368.26	32.69	50	336.85	36.31	20	334.88	30.6	50
Weight (g)	600.77	96.58	39	719.5	156.53	50	607.5	159.44	20	570.41	123	49

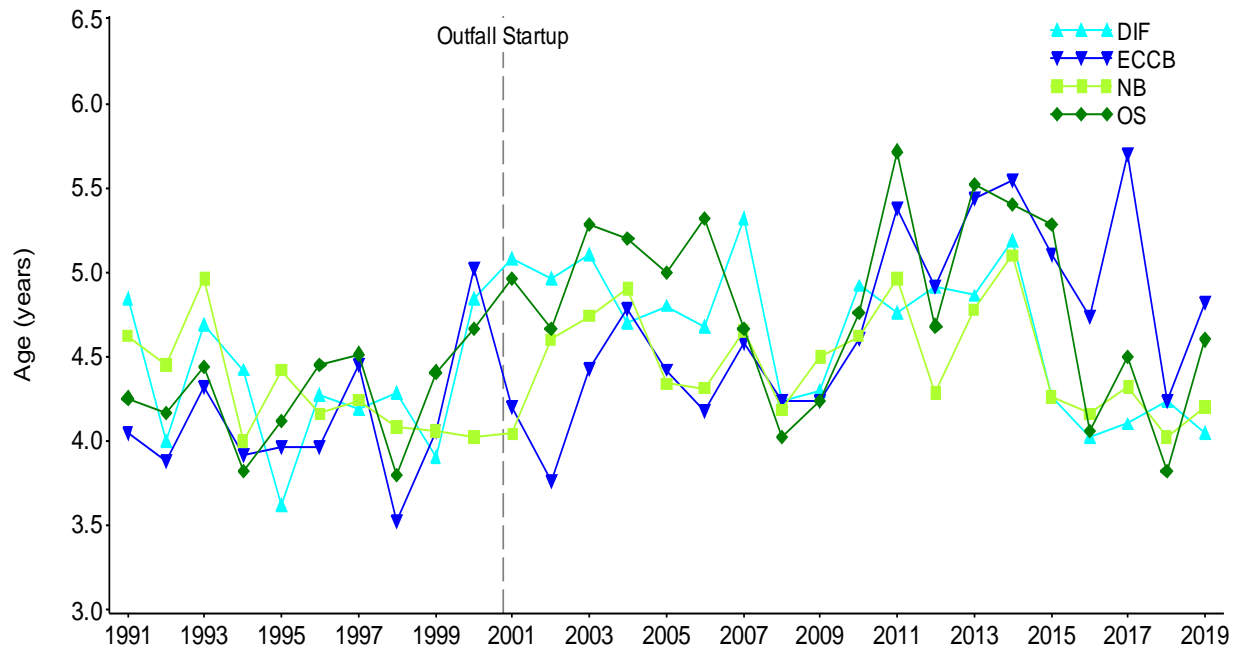


Figure 3-2. Average flounder age (years) compared by station and year.

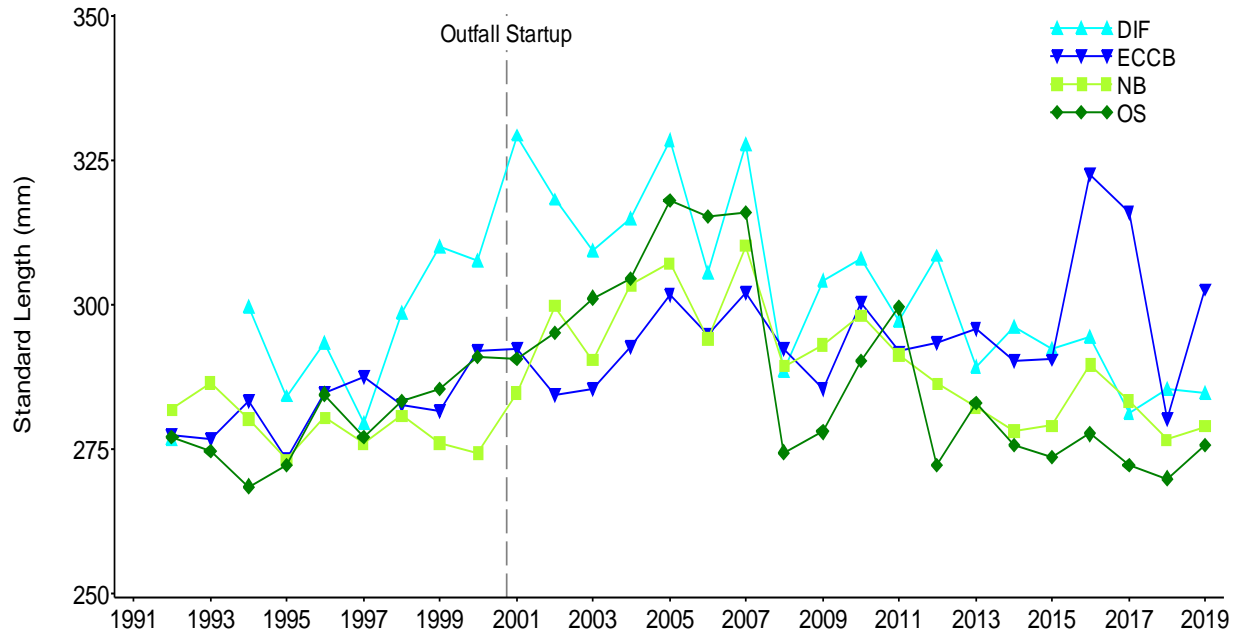


Figure 3-3. Average flounder standard length (mm) compared by station and year.

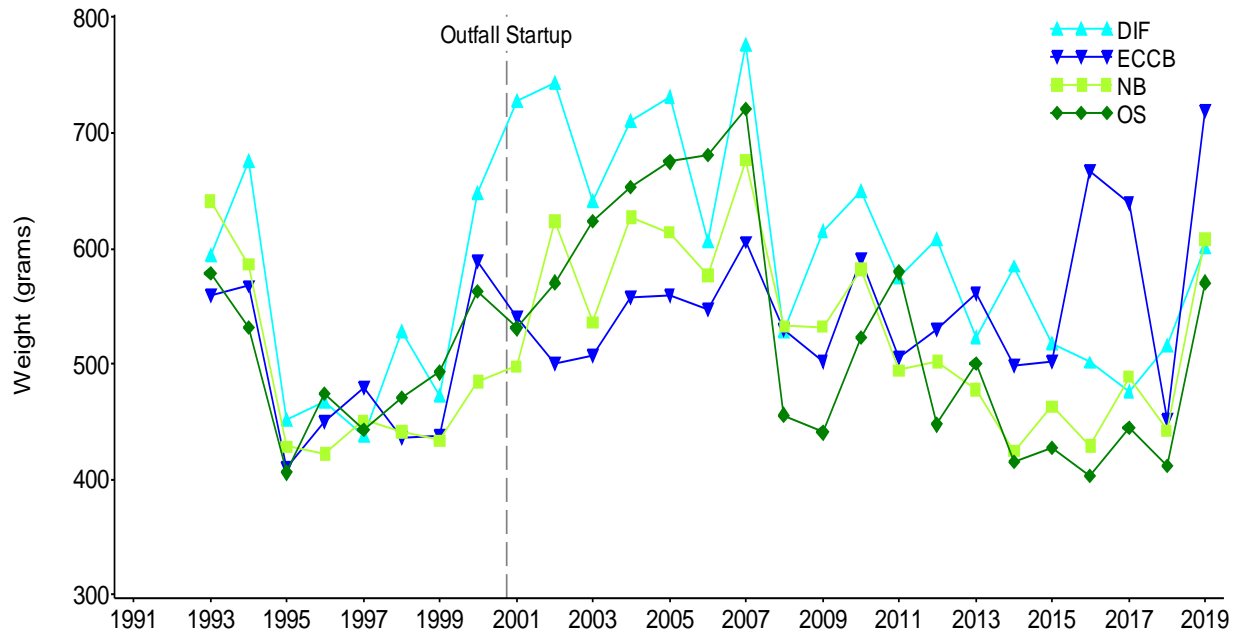


Figure 3-4. Average flounder weight (grams) compared by station and year.

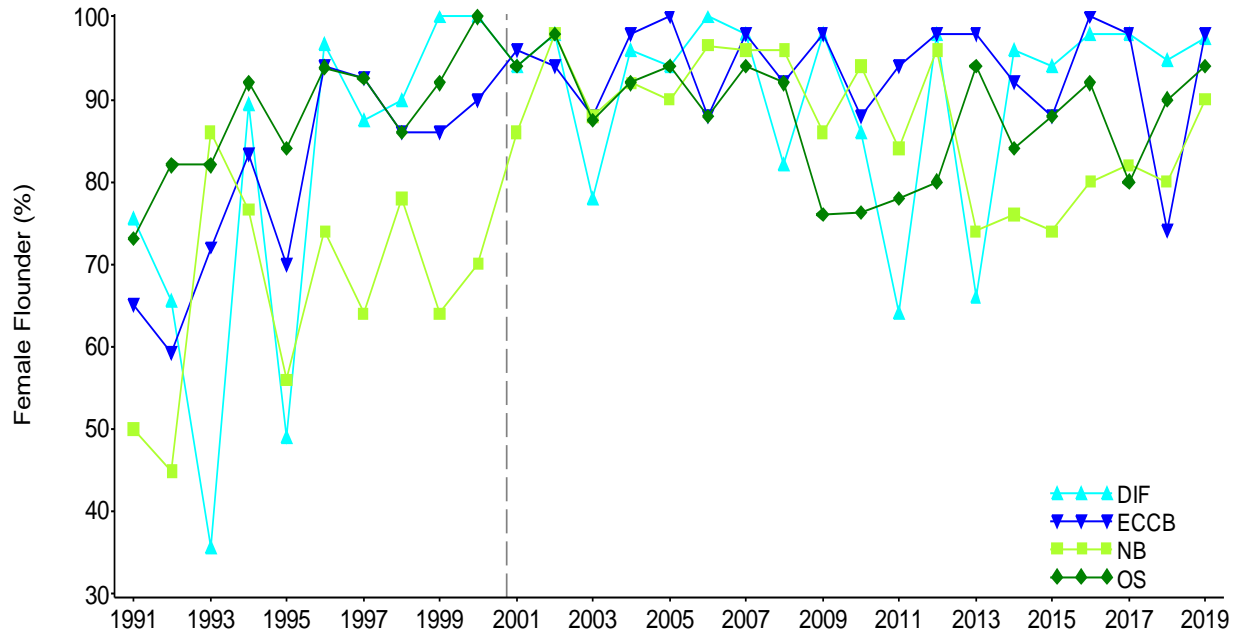


Figure 3-5. Proportion of female flounder compared by station and year.

3.3 External Condition

The external conditions of winter flounder collected in 2019 are presented as prevalence (% of individuals) per station in Table 3-2. Bent fin ray ranged from 8 to 15%, being highest at NB. Blind side ulcers ranged from 0 at ECCB to 10% at NB in 2019. Fin erosion ranged from 10 to 32.5%, being highest at DIF. Lymphocystis ranged from 14% at ECCB to 42% at OS.

Table 3-2. Prevalence (%) of External Conditions Assessed for Winter Flounder Collected in 2019.

External Conditions	Station (Sample size)			
	DIF (40)	ECCB (50)	NB (20)	OS (50)
Bent Fin Ray	15	8	15	14
Blind Side Ulcers	2.5	0	10	2
Fin Erosion (Fin Rot)	32.5	10	10	16
Lymphocystis	15	14	20	42

Ulcer prevalence has been recorded since 2003. It is unclear if ulcers were absent prior to 2003, given lack of a specific record, but if they were present, it was at a very low level. Elevated levels of ulcers were observed from 2003-2006, then decreased from 2007-2010, and were once again elevated in 2011 (Figure 3-6). Since 2011, ulcers have remained at relatively low levels at all stations. Ulcers were present at low levels at DIF and OS, and at 10% at NB, but absent at ECCB in 2019.

Fin ray surface mucous and epithelia are impacted by increased levels of ammonia and other pollutants, making fin erosion a useful parameter for detecting deteriorating water quality conditions (Bosakowski and Wagner 1994). The prevalence of fin erosion for each year was calculated for each station and plotted in Figure 3-7. Fin erosion values for 2019 were highest at DIF, and lowest at ECCB and NB. Compared to 2018, fin erosion increased at OS and ECCB but decreased at DIF and NB.

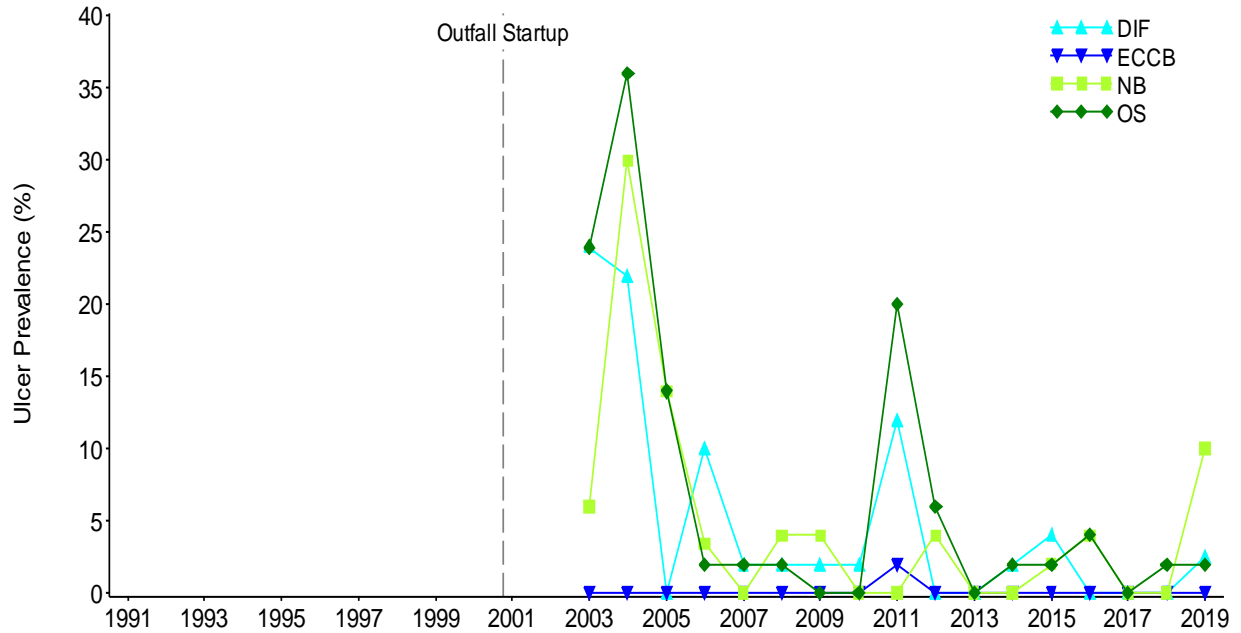


Figure 3-6. Temporal comparison of blind side ulcer prevalence (%) in winter flounder by station.

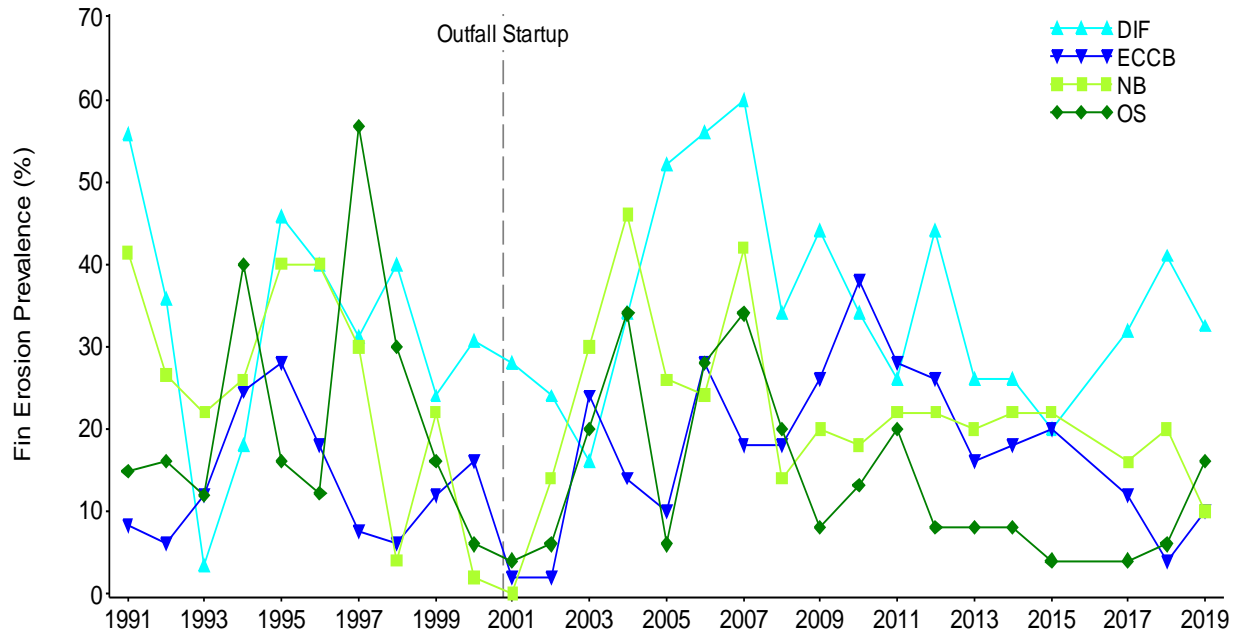


Figure 3-7. Temporal comparison of fin erosion prevalence (%) in winter flounder by station. 2016 data for fin erosion were flagged and excluded from analyses due to inconsistency with this parameter from other years.

3.4 Liver Lesion Prevalence

The prevalence (% of individuals) of liver lesions in winter flounder from each of the four stations sampled in 2019 is presented in Table 3-3. Balloons ranged from 2 to 10%, bile duct protozoa were absent at all stations, biliary proliferation ranged from 2.5 to 10%, centrotubular vacuolation ranged from 0 to 22.5% being lowest at ECCB and highest at DIF, focal hydropic vacuolation was absent at all sites, and liver flukes were absent from all stations except NB. Macrophage aggregation ranged from 35 to 50%, tubular hydropic vacuolation ranged from 0 to 15%, and neoplasia was absent at all sites.

Compared to previous years, neoplasms (Figure 3-8) remained absent at all sites, a situation that has persisted since 2005. Thus it continues to be true that the most significant histopathology associated with Deer Island Flats before the MWRA project began remains totally absent.

Table 3-3. Prevalence (%) of Liver Lesions in Winter Flounder Collected in 2019.

Liver Conditions	Station (Sample size)			
	DIF (40)	ECCB (50)	NB (20)	OS (50)
Balloons	5	2	10	10
Bile Duct Protozoan	0	0	0	0
Biliary Proliferation	2.5	8	10	4
Centrotubular Hydropic Vacuolation	22.5	0	5	6
Focal Hydropic Vacuolation	0	0	0	0
Liver Flukes	0	0	5	0
Macrophage Aggregation	50	46	35	42
Neoplasia	0	0	0	0
Tubular Hydropic Vacuolation	15	0	0	4

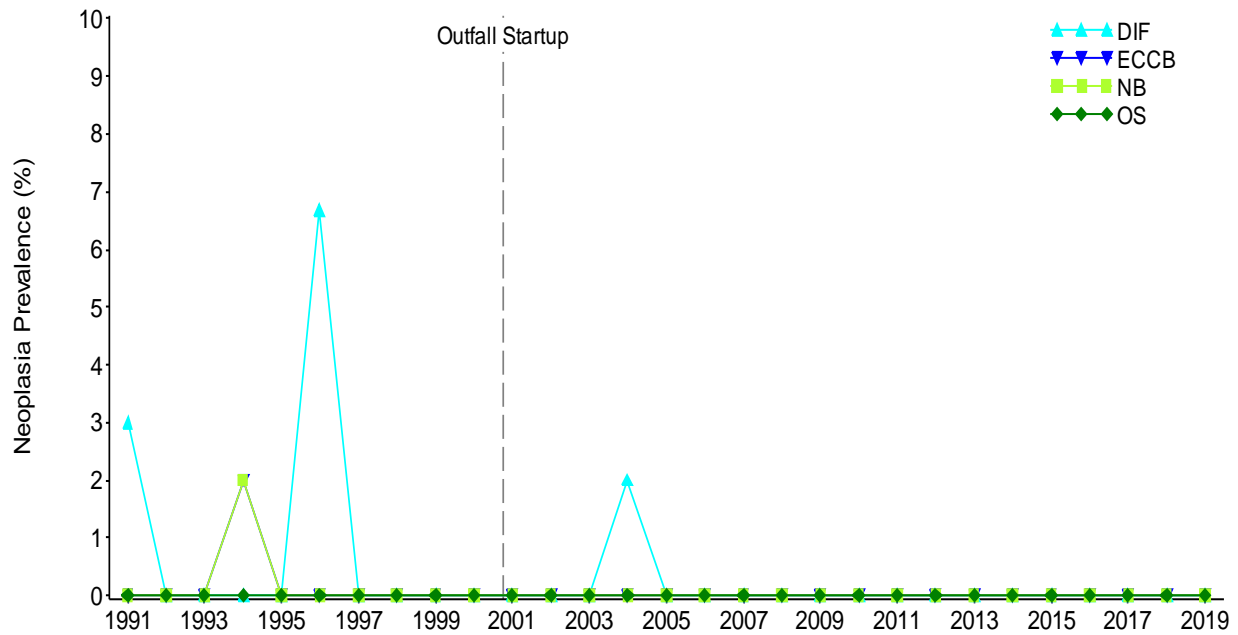


Figure 3-8. Temporal comparison of neoplasia prevalence (%) in winter flounder by station.

Along with neoplasms, hydropic vacuolation, because of its relationship to environmental contaminants, has been one of the principal lesions monitored in winter flounder throughout the program. Figure 3-9 shows a consistent downward trend which appears to have stabilized (with substantial inter-annual variability) around a lesion prevalence in Harbor fish of about 35-40%. The other stations show a continuing low prevalence in 2019.

The severity of CHV (Figure 3-10) has also declined since 1991 at DIF.

Severity at DIF has typically been higher than the intermediate levels found at NB and OS. Severity levels have remained relatively stable at all stations since 2005.

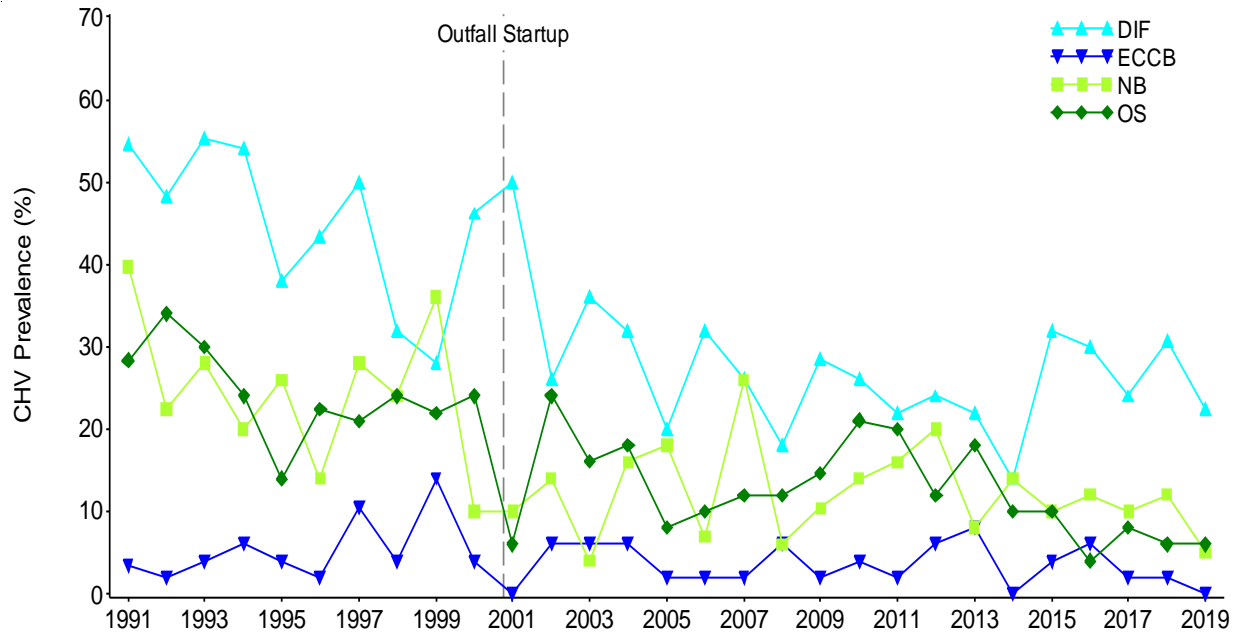


Figure 3-9. Temporal comparison of prevalence (%) of centrotubular hydropic vacuolation in winter flounder by station.

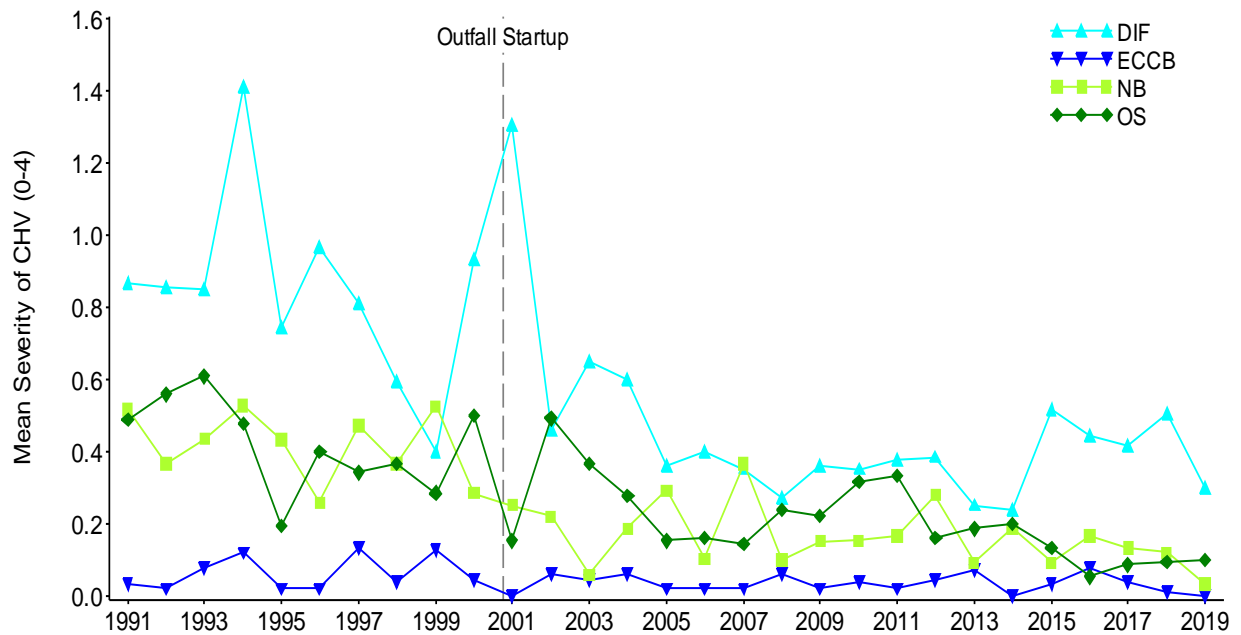


Figure 3-10. Centrotubular hydropic vacuolation severity (rank) in winter flounder compared between sites and years.

Relationships between age and lesion prevalence were also analyzed. The proportion of fish that had CHV (using data collected since 1997) was calculated for each age class at all stations (Figure 3-11). A modest increase in CHV, as might be expected with increased age, was found at ECCB. DIF shows a greater increase with age pre-discharge, compared to post-discharge, suggesting a reducing cumulative impact of remaining toxicants thought to induce this lesion. A slight increase with age is perhaps also seen at OS post-discharge.

To further assess the impact of changes in age on hydropic vacuolation prevalence, the percentage of fish at each station in each year that showed some degree of hydropic vacuolation was divided by the average age of fish for that year at that station. This generated an age-corrected index for the presence of hydropic vacuolation (Figure 3-12). The downward trend in age-corrected hydraulic vacuolation resembles that observed in the uncorrected hydropic vacuolation data discussed previously.

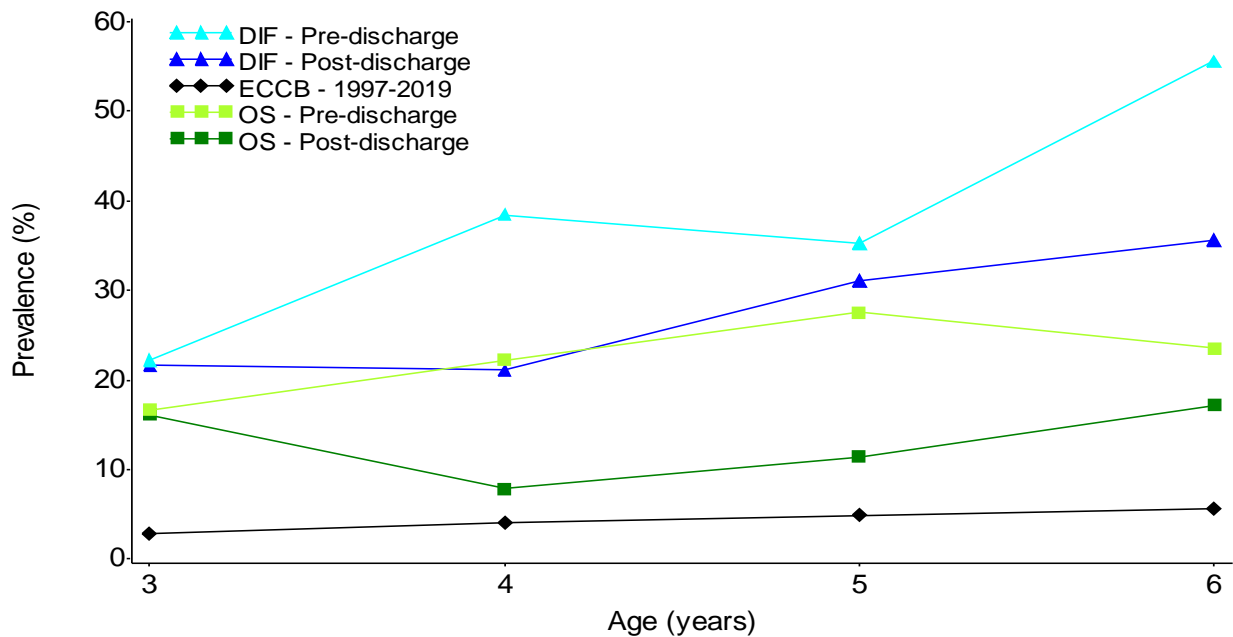


Figure 3-11. Proportion (%) of winter flounder showing hydropic vacuolation for each age.

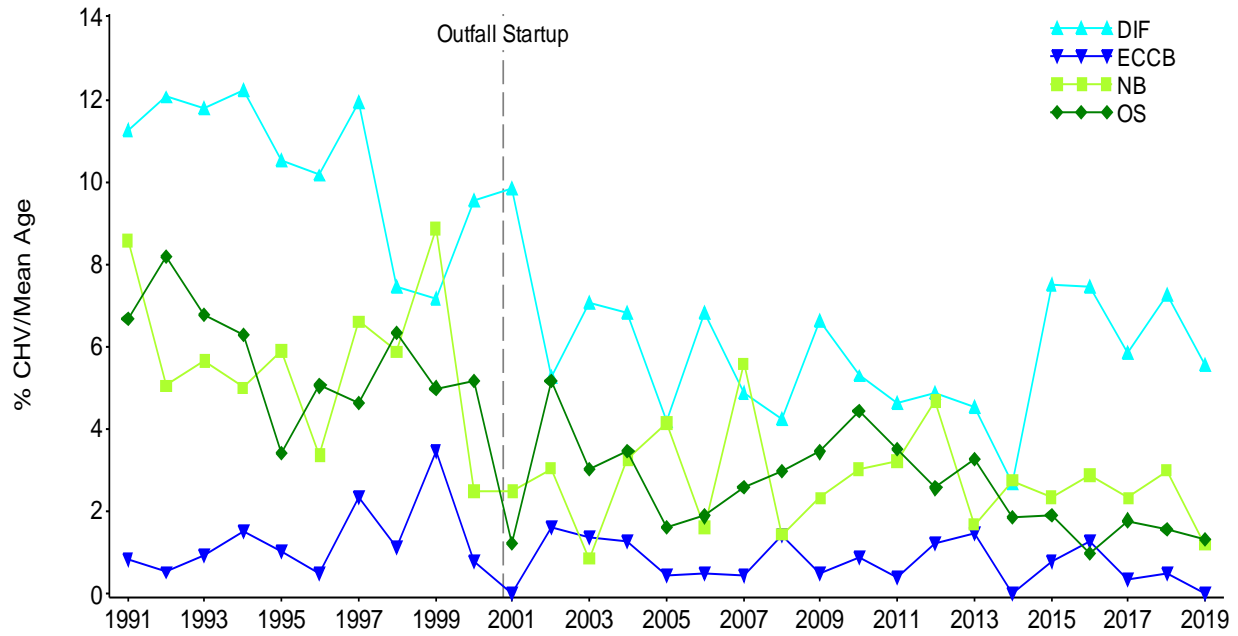


Figure 3-12. Hydroptic vacuolation index (CHV%/age) for each station by year.

3.5 Threshold Comparison

The MWRA Contingency Plan includes threshold levels against which key potential indicators of wastewater impacts are tested (MWRA 2001). Because of the concerns that effluent discharge might increase the prevalence of lesions in Massachusetts Bay populations of winter flounder towards levels seen in Boston Harbor in the 1980s, liver disease prevalence was selected as a key indicator, with a Caution Level threshold set at 44.94% for the prevalence of centrotubular hydroptic vacuolation (CHV) in winter flounder collected at the Outfall Site. CHV prevalence at the Outfall Site during 2019 was 6% (Table 3-3), well below the threshold level.

4. CONCLUSIONS

The 2019 Flounder Survey provided samples from four locations (DIF, NB, OS, and ECCB) and was conducted in a manner consistent with previous surveys. Catch per unit effort at all stations declined from 2018. The overall size of the flounder collected increased during the past decade until 2008, when size returned to levels seen at the beginning of the study, a trend that continued through 2019 except for ECCB which showed a marked increase. As has been the case throughout the duration of the monitoring program, the 2019 catches were dominated by females. Factors influencing sex ratios are complex and poorly understood; however, the 2015 survey report concluded that there is no link between sewage releases into Boston Harbor and Massachusetts Bay and female biased sex ratios (Moore et al. 2016). The already high proportion of females increased at all sites during the baseline period, and since the Outfall came on line but there has been no sustained inter-station difference in proportion of females that could be related to distance from the outfall.

Following increased ulcer prevalence beginning in 2003, extensive pathology and microbiology studies were unable to determine a cause of the ulcers (Moore et al. 2004). Elevated levels of ulcers were observed from 2003 to 2006 at stations except for ECCB. Ulcer prevalence then decreased and remained low from 2007 to 2010, followed by an increase reported in 2011. In 2012 low levels of ulcers were present at OS and NB. No ulcers were observed in 2013, low levels in 2014, 2015 and 2016, none in 2017, and then a low level at OS in 2018. In 2019 NB showed a marked ulcer prevalence increase.

Results of the histological analyses in 2019 support previous observations made from this long-term dataset.

- Age-corrected hydropic vacuolation prevalence data suggest that there has generally been a steady reduction in the contaminant-associated pathology in winter flounder collected at Deer Island Flats that then stabilized (with substantial inter-annual variability) around a lesion prevalence in Harbor fish of about 35-40%.
- The oldest Harbor data were not age-corrected. Uncorrected CHV prevalences in harbor flounder have decreased from over 75% in 1988 to approximately 20% or less in most recent years. This is a remarkable change. The mild reversal to closer to 30% since 2015 returned to 23% in 2019.
- Flounder collected off Nantasket Beach and in the vicinity of the outfall since discharge began in September 2000 also consistently show hydropic vacuolation prevalence at or lower than levels observed during baseline monitoring (1991-2000).
- The high neoplasm prevalence characteristic of fish from DIF in the mid- to late-1980s (Moore et al. 1996) has disappeared. Neoplasia has not been observed in a fish from Boston Harbor since 2004, and has never been observed in fish collected at the outfall site (Moore et al., 2018).
- Disease prevalence at the Eastern Cape Cod Bay reference site has been relatively stable since monitoring began there in 1991 and is consistently the lowest of all areas sampled.

- The prevalence of CHV in flounder from the vicinity of MWRA's Massachusetts Bay outfall has not shown increases over levels observed during baseline monitoring. During most years since offshore discharge was initiated, prevalence has been less than that observed during the baseline monitoring before 2001. A slow rise in the prevalence of age-corrected CHV in flounder collected in the vicinity of the outfall was observed between 2005 and 2010. It has declined again in recent years with some year-to-year variability (Figure 3-12).

5. REFERENCES

- Bosakowski, T. and EJ Wagner. 1994. A survey of trout fin erosion, water quality, and rearing conditions at state fish hatcheries in Utah. *Journal of the World Aquaculture Society*. 25(2):308–316.
- Fields, B. 1988. Chapter 16: Winter flounder *Pseudopleuronectes americanus*. In: Penttila, J. and L. Dery (eds). Age determination methods for Northwest Atlantic species. NOAA Tech. Rpt. NMFS 72, 135 p.
- Moore MJ, McElroy AE, Geoghegan P, Siskey MR, Pembroke AE. 2016. Flounder Monitoring Report: 2015 Results. Boston: Massachusetts Water Resources Authority. Report 2016-05. 40 p.
- Moore MJ, RM Smolowitz, Uhlinger K. 2004. Flounder Ulcer Studies. Boston: Massachusetts Water Resources Authority. Report 2004-10. 19 p.
- Moore MJ, Shea D, Hillman R, Stegeman JJ. 1996. Trends in hepatic tumors and hydropic vacuolation, fin erosion, organic chemicals and stable isotope ratios in winter flounder from Massachusetts, USA. *Mar. Poll. Bull.* 32:458-470.
- Moore, M., et al., 2018. Toxics source reduction and sewage upgrades eliminated winter flounder liver neoplasia (1984–2017) from Boston Harbor, MA, USA <https://doi.org/10.3354/dao03299>. *Diseases of Aquatic Organisms*, 131: 239-243.
- MWRA. 1991. Massachusetts Water Resources Authority effluent outfall monitoring plan. Phase I: baseline studies. MWRA Environmental Quality Department, November 1991. Boston: Massachusetts Water Resources Authority. Report 1991-ms-02. 95 p.
- MWRA. 1997. Massachusetts Water Resources Authority effluent outfall monitoring plan: Phase II post-discharge monitoring. Boston: Massachusetts Water Resources Authority. Report 1997-ms-44. 61 p.
- MWRA. 2001. Massachusetts Water Resources Authority Contingency Plan Revision 1. Boston: Massachusetts Water Resources Authority. Report ENQUAD 2001-ms-71. 47 p.
- MWRA. 2004. Massachusetts Water Resources Authority effluent outfall monitoring plan Revision 1, March 2004. Boston: Massachusetts Water Resources Authority. Report 2004-ms-092. 65 p.
- MWRA. 2010. Massachusetts Water Resources Authority effluent outfall ambient monitoring plan Revision 2. July 2010. Boston: Massachusetts Water Resources Authority. Report 2010-04. 107 p.
- Rutecki, D, Nestler, EC, Moore MJ. 2017. Quality Assurance Project Plan for Fish and Shellfish Monitoring: 2017-2019. Boston: Massachusetts Water Resources Authority. Report 2017-03. 73 p. plus Appendices A to C.



Massachusetts Water Resources Authority

100 First Avenue • Boston, MA 02129

www.mwra.com

617-242-6000